

CONTACTS

Coordinator
Herman Goossens
herman.goossens@uza.be

Deputy Coordinator
Menno de Jong
m.d.dejong@amc.uva.nl

Project Manager
David de Pooter
david.depooter@uantwerpen.be

Communication Managers
Melanie Hoste
melanie.hoste@uantwerpen.be
Daniele Pazzola
daniele.pazzola@uantwerpen.be

PREPARE Coordination Team
University of Antwerp, Campus Drie Eiken,
Laboratory of Medical Microbiology
Universiteitsplein 1, S6.20
2610 Wilrijk, Belgium
prepare@uantwerpen.be
Phone: +32 3 265 2551

For further information on PREPARE,
please visit our website
www.prepare-europe.eu

 [Twitter.com/PREPARE-Europe](https://twitter.com/PREPARE-Europe)

“ We have a moral obligation to learn lessons from past outbreaks and ensure that essential preparedness capabilities are in place. ”

Herman Goossens, PREPARE Coordinator

PREPARE Partners

 **University of Antwerp**
University of Antwerp
VAXINFECTIO, Laboratory of Medical Microbiology - Antwerp, Belgium

 **University of Oxford**
Clinical Research Unit
Oxford, United Kingdom


 **Biocartis**
Mechelen, Belgium

 **ERS** EUROPEAN RESPIRATORY SOCIETY
ERS - European Respiratory Society
Lausanne, Switzerland


 **amc**
Academic Medical Center
Department of Medical Microbiology
Amsterdam, The Netherlands

 **CAPNETZ**
Stiftung
Hannover, Germany

 **biomax**
biomax informatics ag
Biomax Informatics AG
Knowledge Management and Data Mining - Planegg, Germany

 **Wonca**
WONCA - World Organization of National Colleges, Academies and Academic Associations of General Practitioners/Family Physicians
Copenhagen, Denmark

 **University of Cardiff**
Primary Care & Public Health
Cardiff, United Kingdom

 **SERGAS-Hospital Clinico Universitario de Santiago**
Pediatrics Department
Santiago de Compostela, Spain

 **Janssen**
Janssen Diagnostics
Beerse, Belgium

 **ESWI**
ESWI - European Scientific Working group on Influenza
Laarne, Belgium

 **UMC Utrecht**
University Medical Center Utrecht
Julius Centre, Department of Medical Microbiology
Utrecht, The Netherlands

 **Janssen**
Janssen Pharmaceutica
Beerse, Belgium

 **BioMérieux**
BioMérieux - Microbiology R&D
La Balme Les Grottes, France

 **Royal Brompton & Harefield NHS Foundation Trust**
Royal Brompton & Harefield NHS Foundation Trust
London, United Kingdom

 **Charité**
Charité - Universitätsmedizin Berlin
Berlin, Germany

 **Institut Pasteur**
Insitut Pasteur
Molecular Genetics of RNA Viruses Unit - Paris, France

 **ICNARC**
ICNARC – Intensive Care National Audit & Research Centre
London, United Kingdom


 **ESCMID**
European Society of Clinical microbiology and Infectious Diseases
Basel, Switzerland

 **Erasmus MC**
Erasmus Medical Center
Department of Viroscience
Rotterdam, The Netherlands

 **University of Split**
Dept. of Public Health,
Croatian Centre for Global Health - Split, Croatia

 **Penta**
Child Health Research
Fondazione PENTA
Padova, Italy

 **Berry Consultants**
Berry Consultants
Texas, United States

 **Imperial College London**
Imperial College London
National Heart & Lung Institute,
Centre for Respiratory Infection
London, United Kingdom

 **University College Dublin**
School of Medicine and Medical Science
Dublin, Ireland

 **University of Western Australia**
School of Medicine and Pharmacology
Crawley, Australia

 **Universitätsklinikum Jena**
Universitätsklinikum Jena
Jena, Germany



PREPARE

Platform for European Preparedness Against [Re-]emerging Epidemics



PREPARE is funded by the European Commission's FP7 Programme under grant agreement No. 602525

PREPARE

The Platform for European Preparedness Against (Re-)emerging Epidemics (PREPARE) is an EU funded clinical research network that aims to build Europe's capacity for rapid clinical research responses to severe ID outbreaks with epidemic potential, specifically by initiating large-scale pan-European clinical research studies.

Clinical research initiated in response to severe infectious disease outbreaks is typically delayed, isolated and fragmented and has little to no impact on informing clinical management strategies and improving patient outcomes. PREPARE is designed to speed up the time to deliver clinical research in the event of a severe infectious disease epidemic that threatens the health and security of the European public.



During inter-epidemic periods, PREPARE conducts pan-European, multi-site, clinical research across Europe. In this way, the PREPARE network remains active, practiced and ready to re-orientate its activities in the event of an epidemic scenario.

If there is a threat to Europe of a (re-)emerging severe ID outbreak, epidemic or pandemic, PREPARE can be triggered to respond. A response mode will be activated dependent on the threat presented by the infectious disease outbreak: mode 1 for a limited threat, mode 2 for a potential threat, mode 3 for an immediate threat (see Figure below).

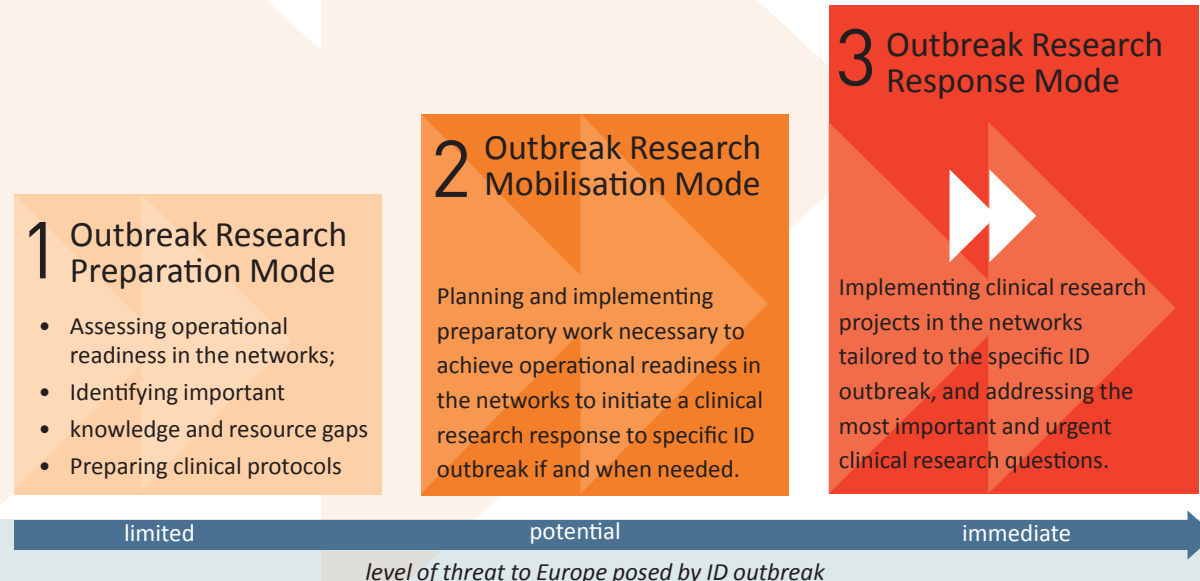
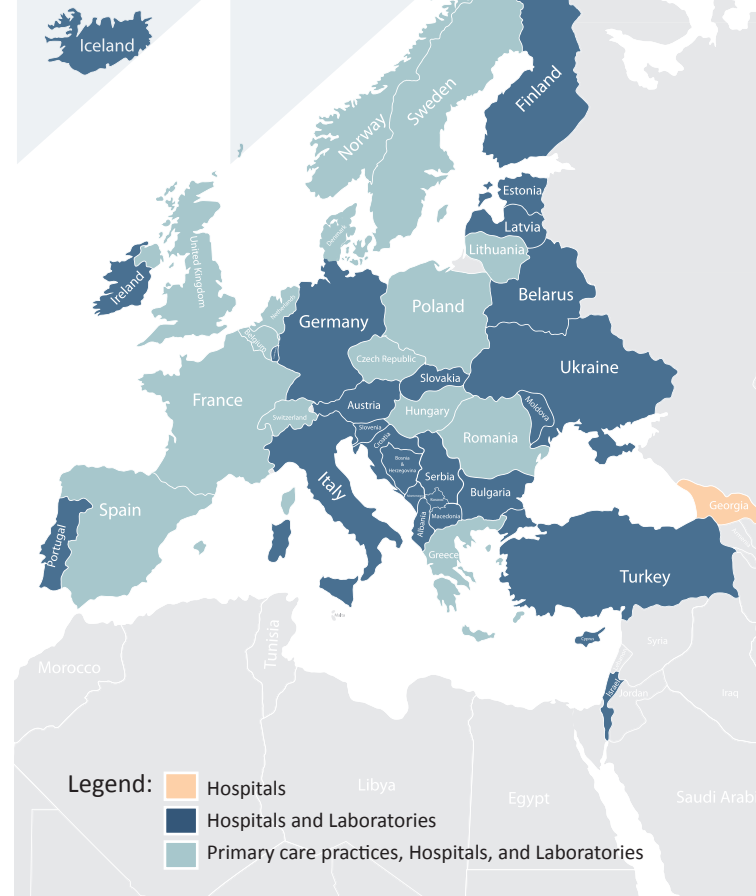


Figure: PREPARE's Outbreak Research Modes

PREPARE Platforms



PREPARE's infrastructure covers

- > 200 primary care practices in 15 European countries
- > 800 hospitals in 42 countries
- > 600 laboratories in 41 countries

PREPARE's Clinical Studies

During inter-epidemic periods, PREPARE carries out preparedness research activities in the form of three observational studies and two adaptive platform design studies.



Observational studies

Multi-centre European study of MAJOR Infectious Disease Syndromes (MERMAIDS) comprises of three observational studies:

- MERMAIDS-ARI:** Acute Respiratory Infections (ARI) in adults are admitted to hospital or presenting in primary care with symptoms of a recent acute respiratory infection.
- MERMAIDS-PED:** Sepsis-like syndrome in infants and ARI in children are admitted to hospital care with an episode of community-acquired sepsis-like syndrome or ARI.
- MERMAIDS-ARBO:** Arboviral compatible febrile illness. Adults aged 18 and above admitted to hospital with symptoms compatible with arboviral febrile illness.

Adaptive platform design studies



- Antivirals for influenza like illness? An rCT of Clinical and Cost effectiveness in primary Care (ALIC4E)**

A European multi-centre platform, responsive-adaptive, randomised controlled interventional trial on influenza like illness.



- Randomized, Embedded, Multifactorial, Adaptive Platform trial for Community-Acquired Pneumonia (REMAP-CAP)**

A global adaptive randomised controlled trial to improve survival in ICU-admitted patients with severe community acquired pneumonia.