

PREPAREDNESS FOR ADMISSION OF EBOLA PATIENTS IN EUROPE: A SURVEY

METHODOLOGY

WHY
Are hospitals prepared for the admission of patients suspected for Ebola virus disease (EVD) in Europe?

WHAT
An online survey covering questions about:

1. the preparedness of hospitals for admission of EVD patients
2. the characteristics of admission rooms and laboratories
3. the awareness of national and hospital guidelines for management of patients with haemorrhagic fever
4. the performance of preparedness activities in response to the Ebola crisis

WHEN
August–September 2014

WHO
236 hospitals in 38 countries
Mostly tertiary care centres

RESULTS

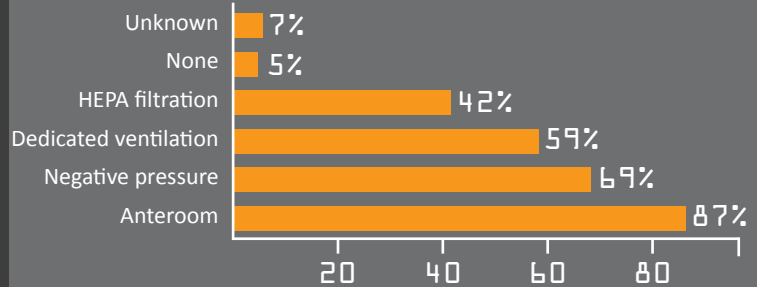
1. ADMISSION

Would you admit suspected EVD* patients?



2. CHARACTERISTICS

Characteristics of admission facilities in hospitals?

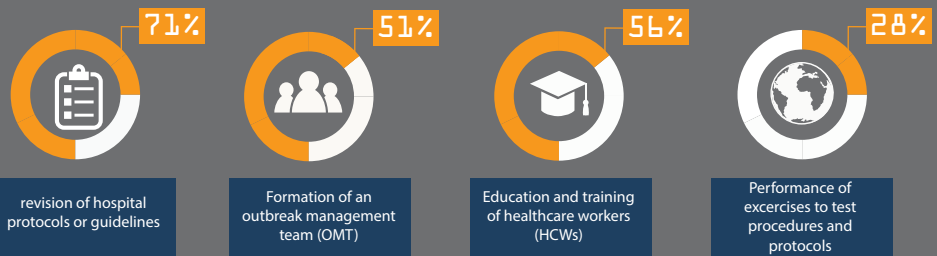


3. GUIDELINES

Are you aware of the existence of national guidelines for management of patients with haemorrhagic fever?



4. PREPAREDNESS ACTIVITY



EUROPE



MORE INFO

www.prepare-europe.eu
prepare@uantwerpen.be
@PREPARE_EUROPE

* EVD=Ebola Virus Disease

